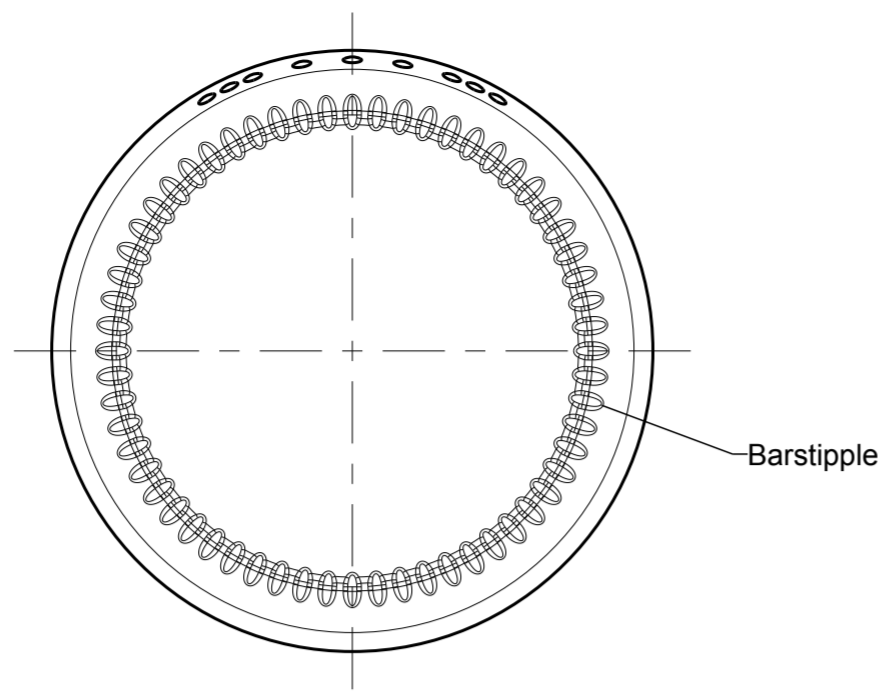
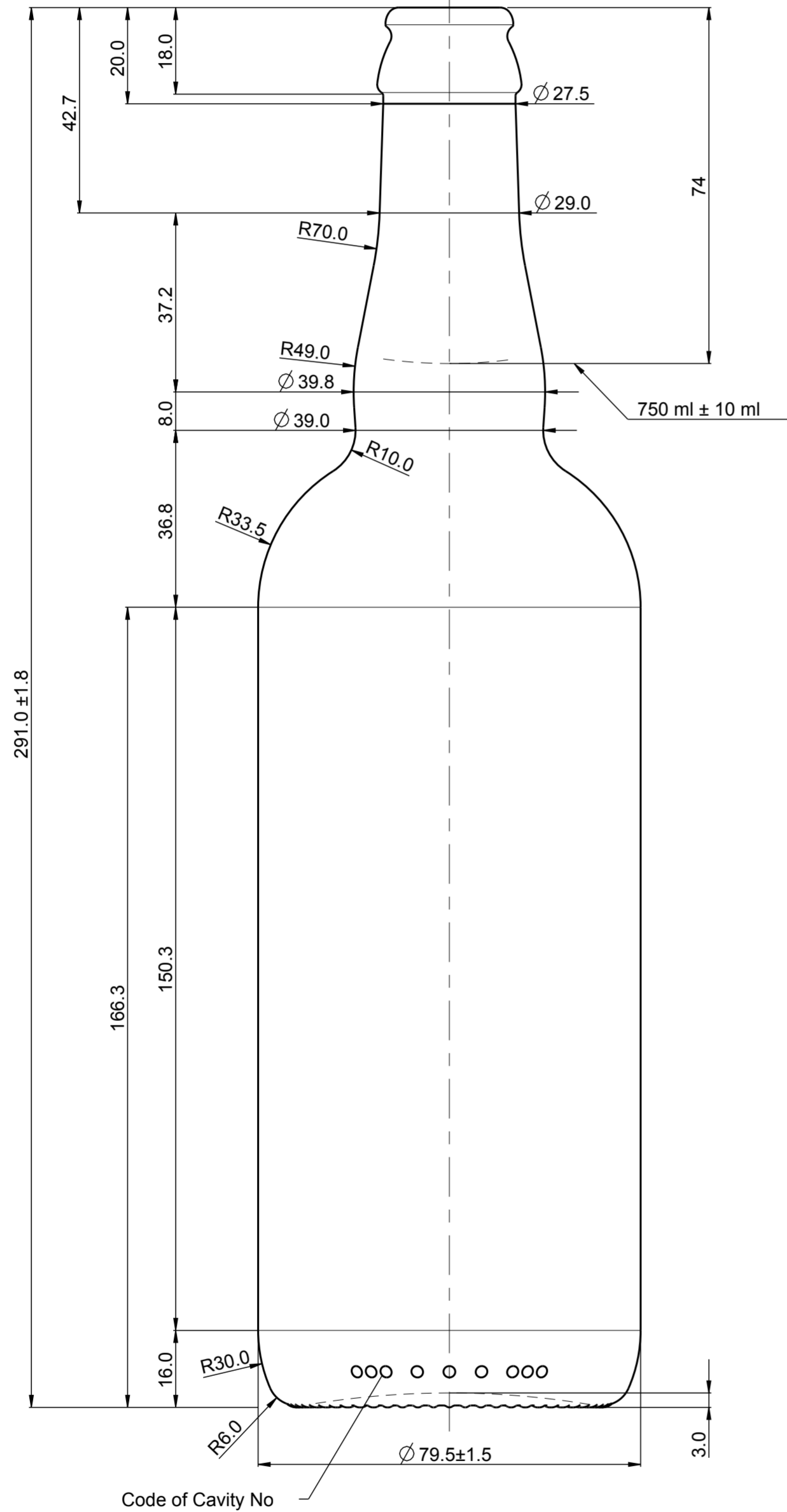


COLOUR	SAP SPEAKING NO	SAP MATERIAL NO
STANDARD AMBER	20-10627 -1	31003306

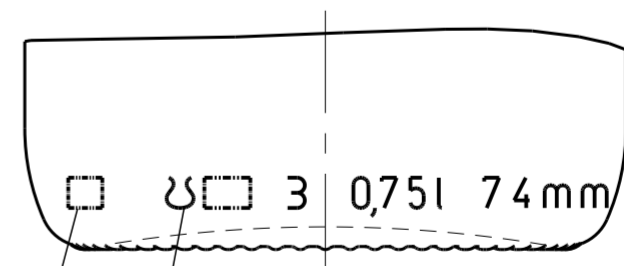
Bottom view



Front view
26H 180 Crown Cork Special




Back view
Developed view of description



Cavity No
Puntmark Ardagh

0.4 STIPPLE HEIGHT IS INCLUDED IN ALL DIMENSIONS FROM THE BASE

NOMINAL CAPACITY	750.0 ± 10.0 ml	SPECIFICATION AGREEMENTS ARE BASED ON TOLERANCED DIMENSIONS ONLY DO NOT SCALE DRAWING COPYRIGHT RESERVED, NOT TO BE COPIED IN WHOLE OR PART WITHOUT WRITTEN PERMISSION FROM ARDAGH GLASS LTD. ALL DIMENSIONS ARE IN MILLIMETERS Document supervised by SAP, cProject and Windchill PDMLink systems)	Product & Mould Design Glass - Europe	ArdaghGroup 			
BRIMFUL CAPACITY	780.0 ml						
VACUITY	30.0 ml (4.0 %)			DESIGNER	ChemnitzK	SHEET	1 / 1
FINISH DESCRIPTION	26H 180 Crown Cork Special			DATE	09.08.2013	SCALE	1:1 (A2)
FINISH NUMBER	AF00403			CUSTOMER	Maisels KG	PROJECT	5136
MINIMUM THROUGH BORE	16.0 mm			PRODUCT NAME			
WEIGHT NOMINAL	~570 g			BELGIEN-BIERFL_750_C20_26CC			
USAGE	RETURNABLE	D Changed Usage	TjandraK	-	15.01.2016	OLD NUMBER	
CARBONATION	max. 6.0 g CO ₂ / l	C Changed Product Code	ChemnitzK	-	04.12.2013	DRAWING NO.	
TILT ANGLE	16.8°	B Add SAP Material Number	ChemnitzK	-	22.10.2013	D14025 D	PRODUCT CODE
		A First drawing	ChemnitzK	-	09.08.2013		10627 -1
		REVISION	DSG	CHK	DATE		